



Remutaka Conservation Trust Trapping Programme 2003 - 2023

Remutaka Conservation Trust

Network

Effort

Results

Questions frequently asked of me

Trapped area

- Trapping network:
 - 2003/04 - 200 to 1,000ha
 - 2006/08 - 1,800 to 2,500ha
 - 2009/12 - 2,800 to 3,000ha
 - 2015 - 7,500ha
 - 2015/2016 - 100m to 50m
 - 2017 - A24 self resetting
 - 2023/24 - review of network

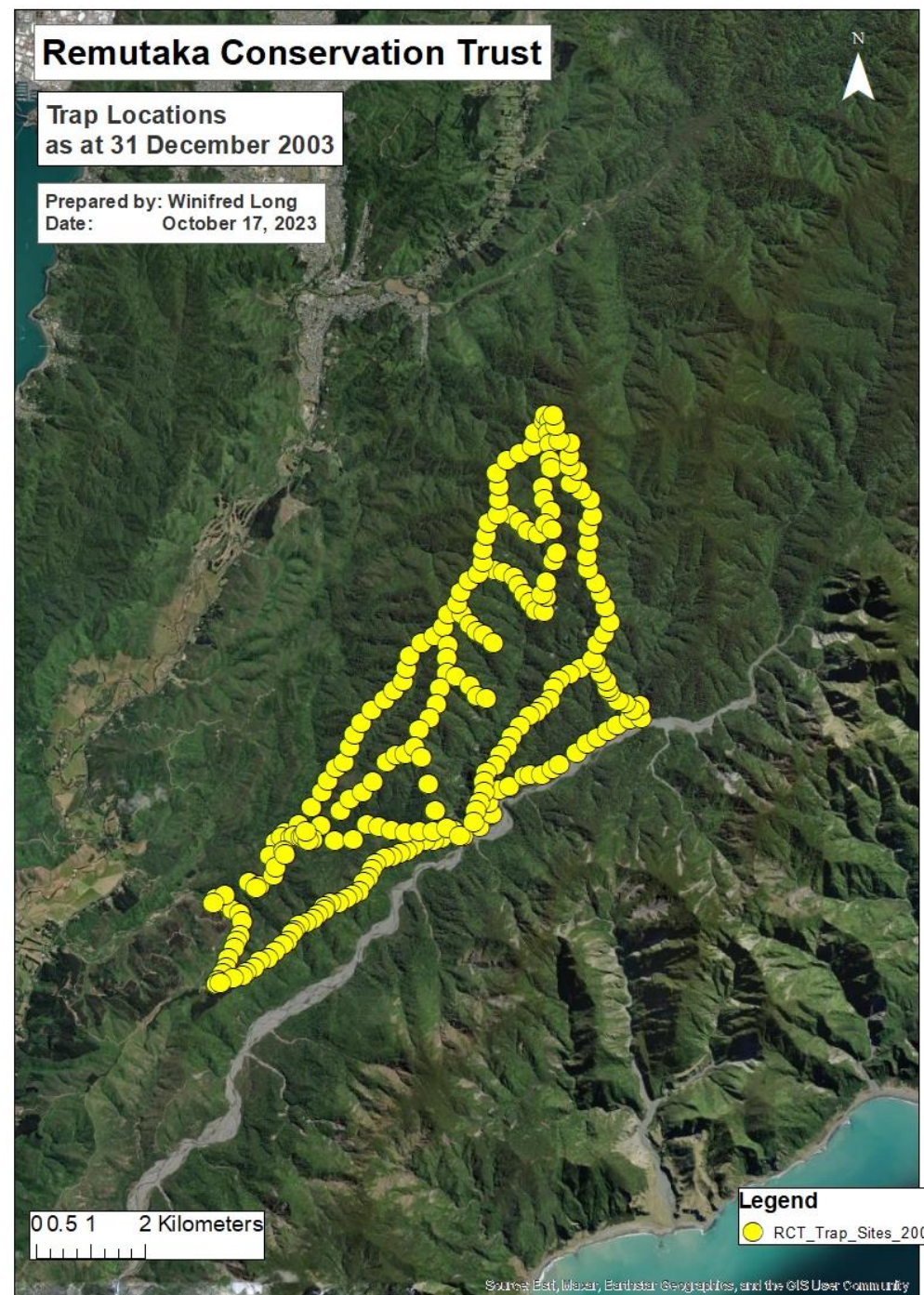


Photo: Remutaka Conservation Trust

Network

2003/04

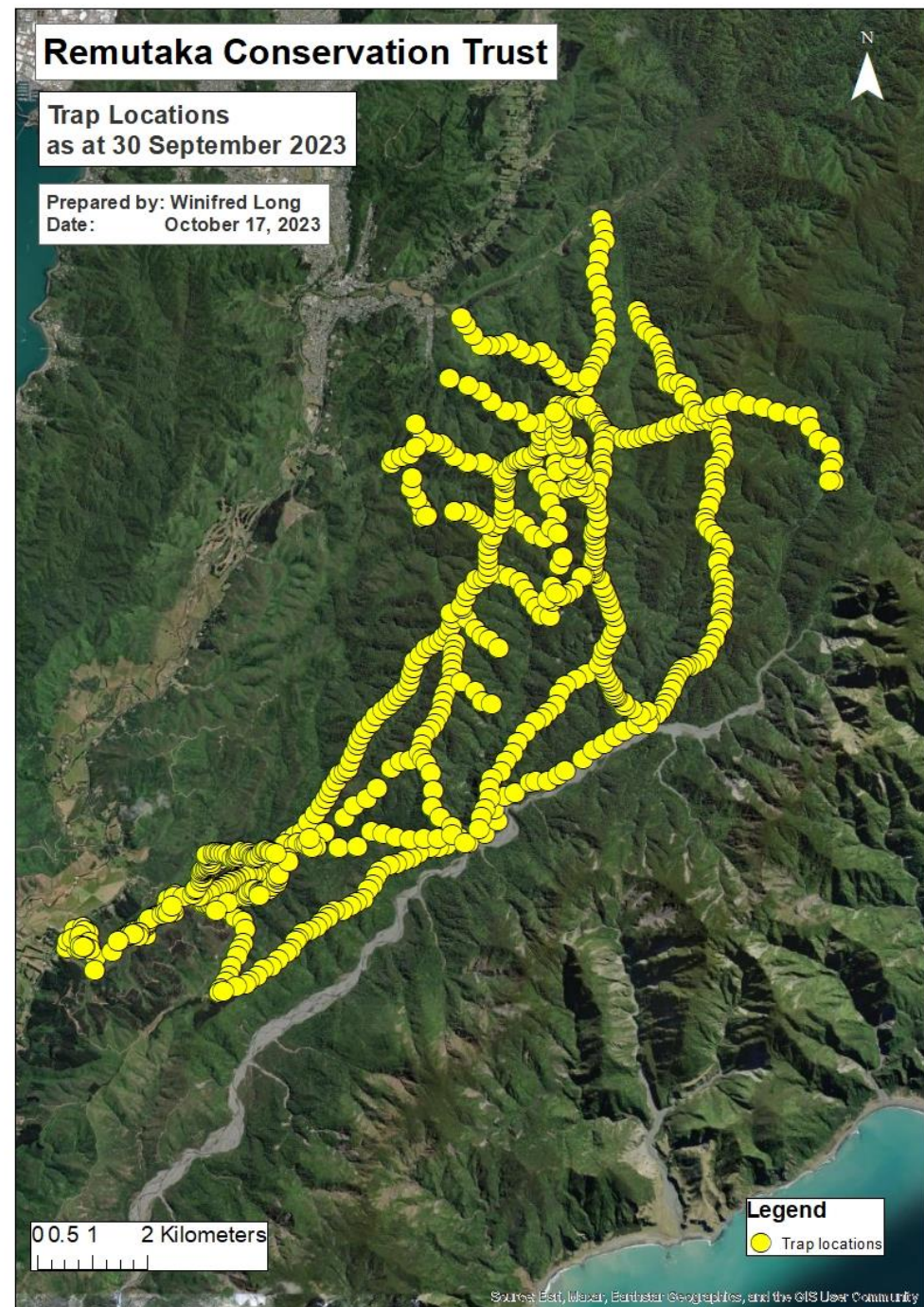
- 18 traplines
- 246 traps (DOC only)
- 2,300 trap-checks



Network

2022/23

- 41 traplines
- 950+ traps (DOC, rat, possum, A24)
- 17,300 trap-checks



The teams

Trappers, approximately
160

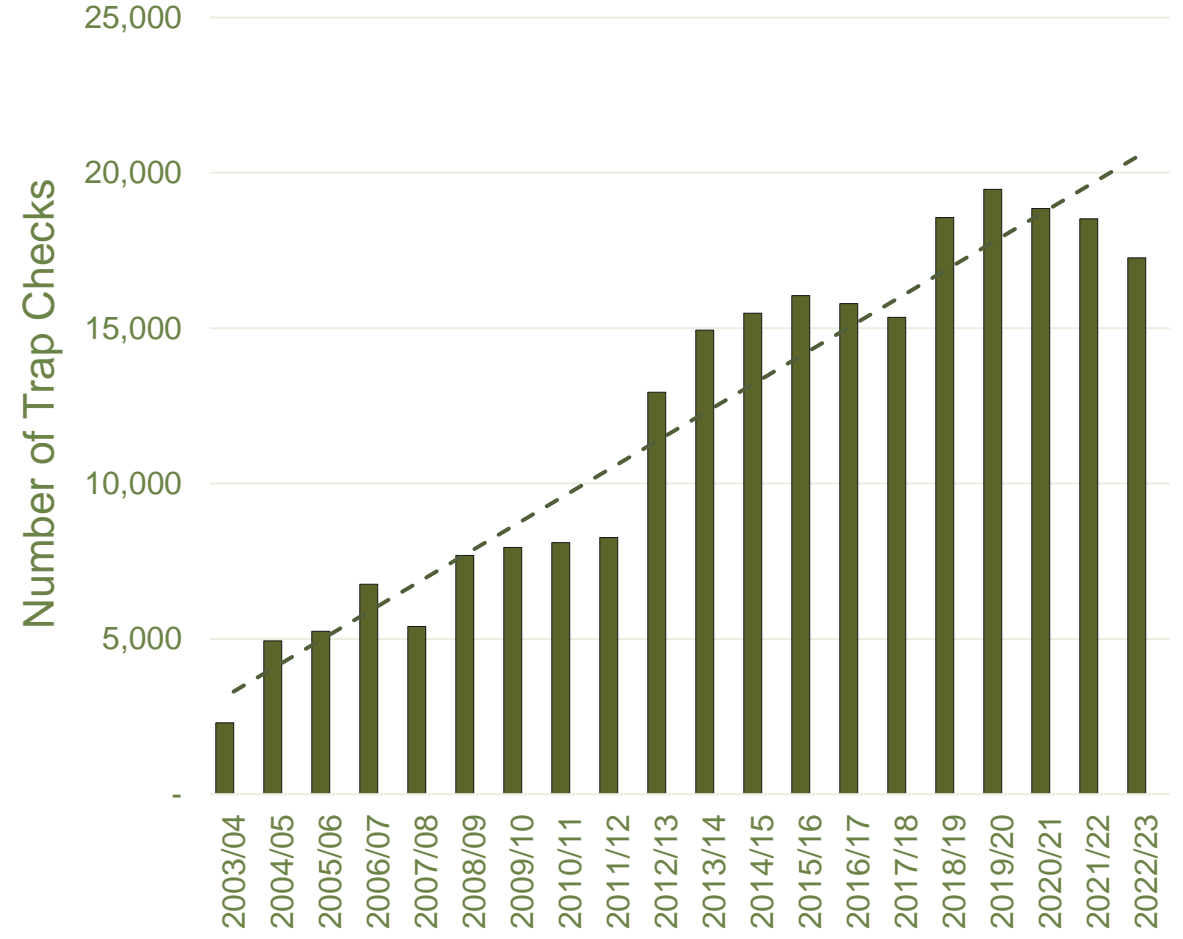
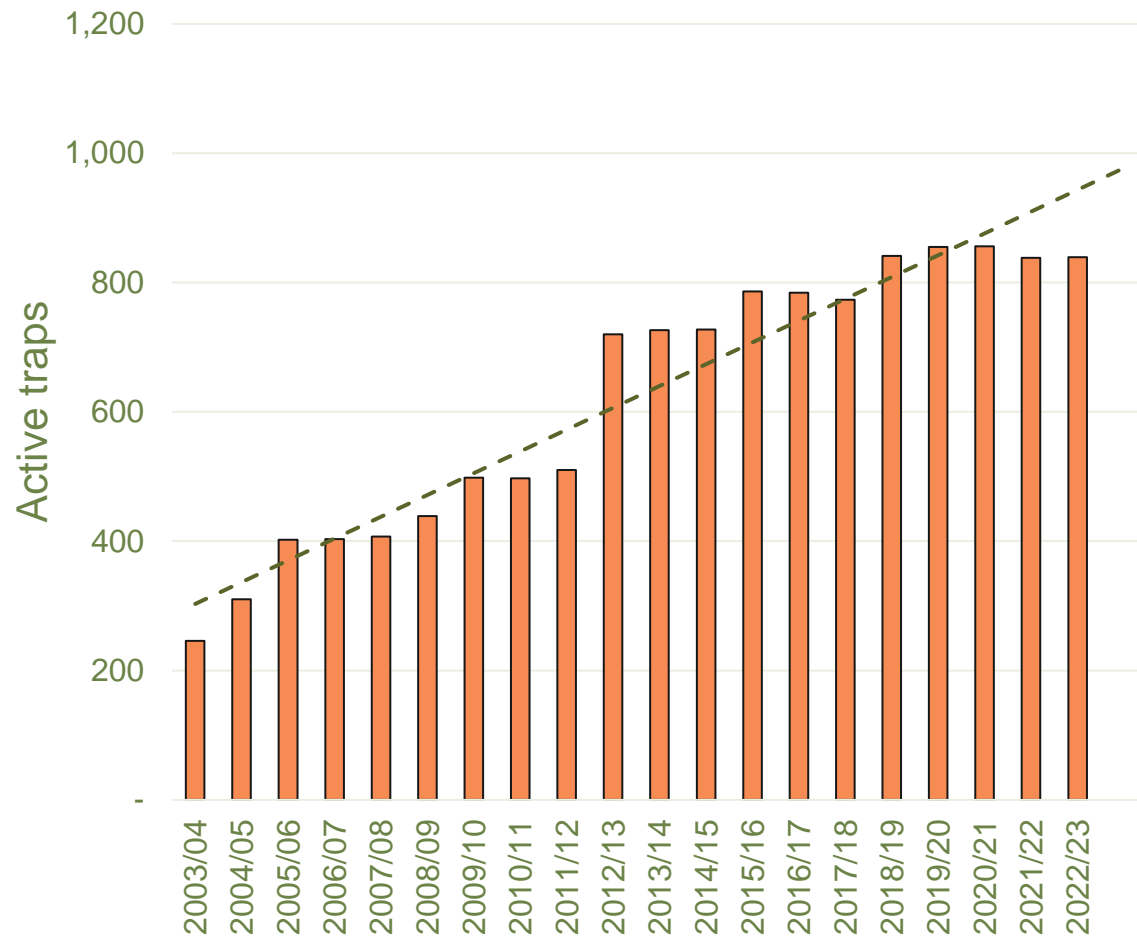
Fixit team

Trap testing team

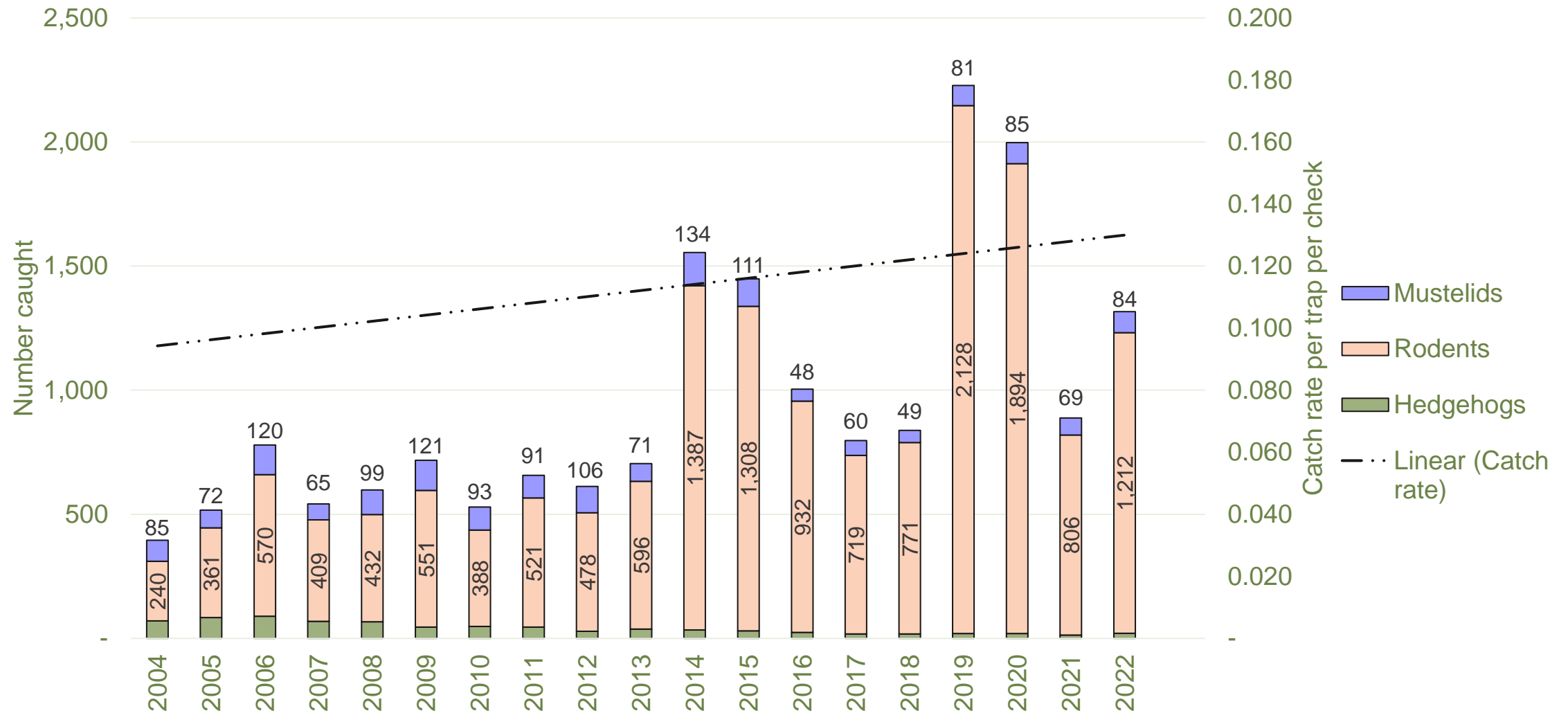
Behind the scenes



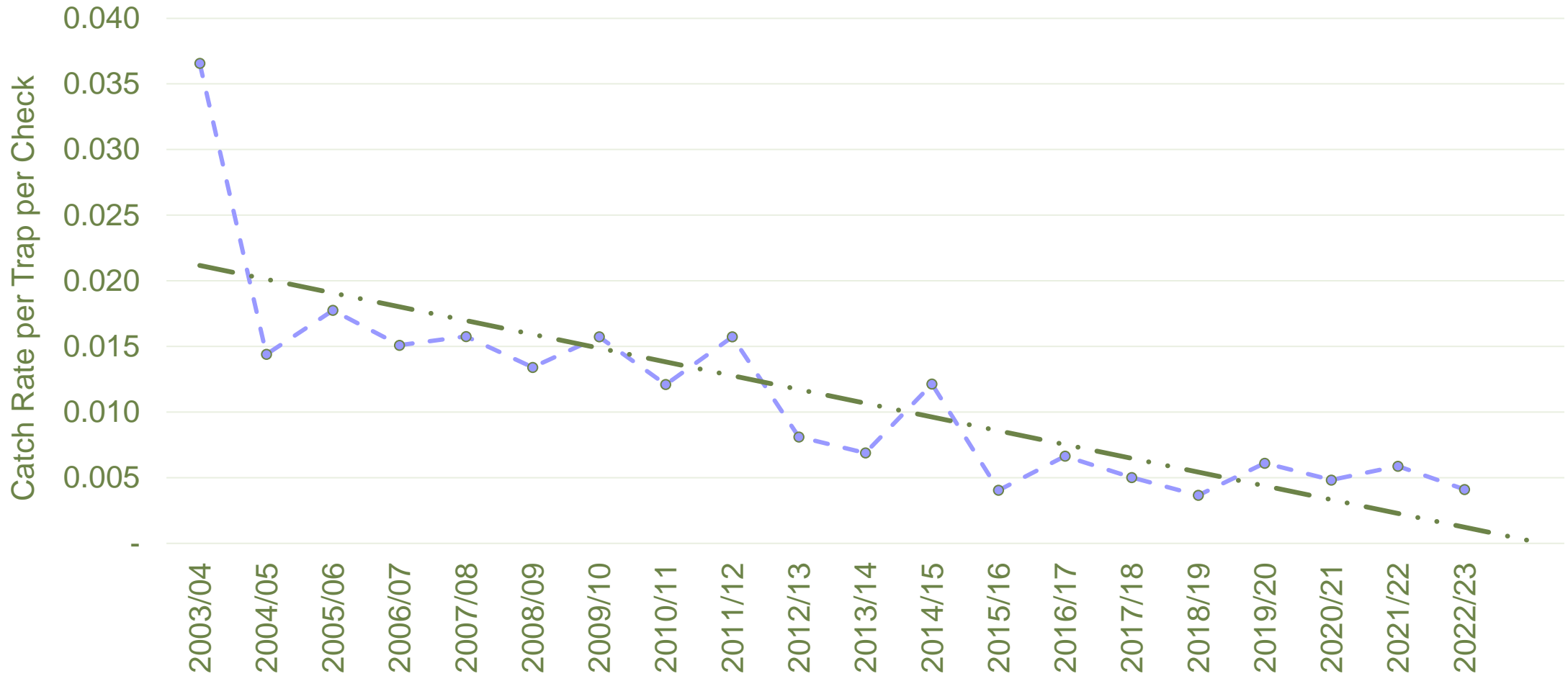
Numbers of traps and trap checks (excluding A24s)



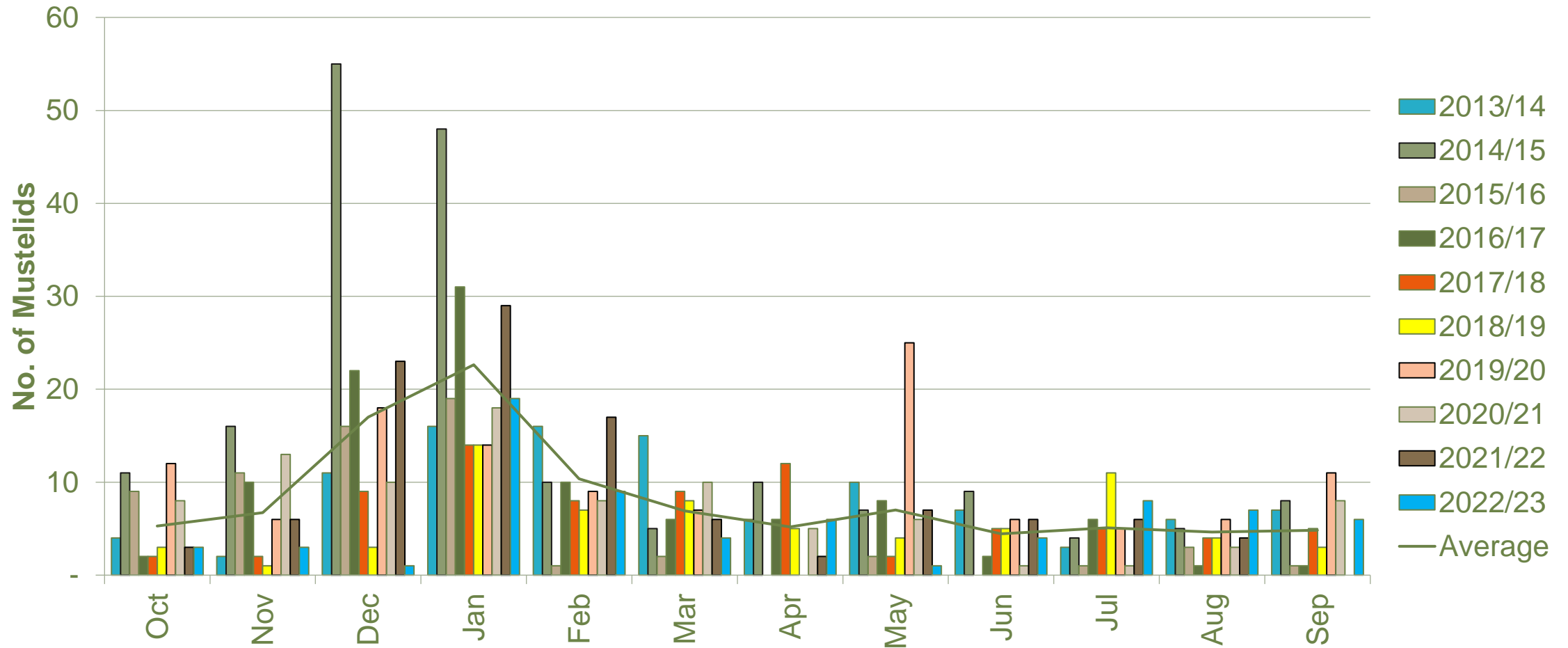
Trapping results: All predators



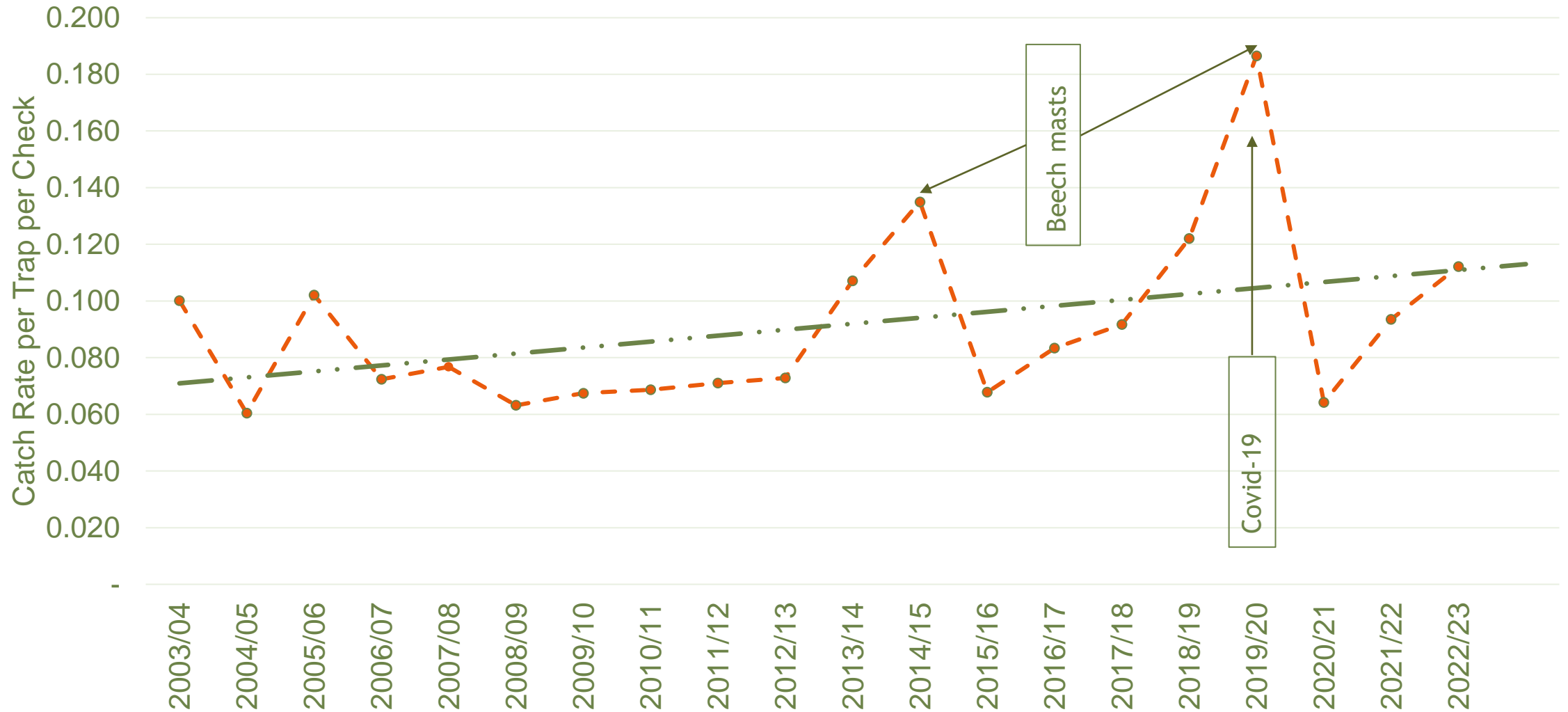
Trapping results: Mustelid catch rate



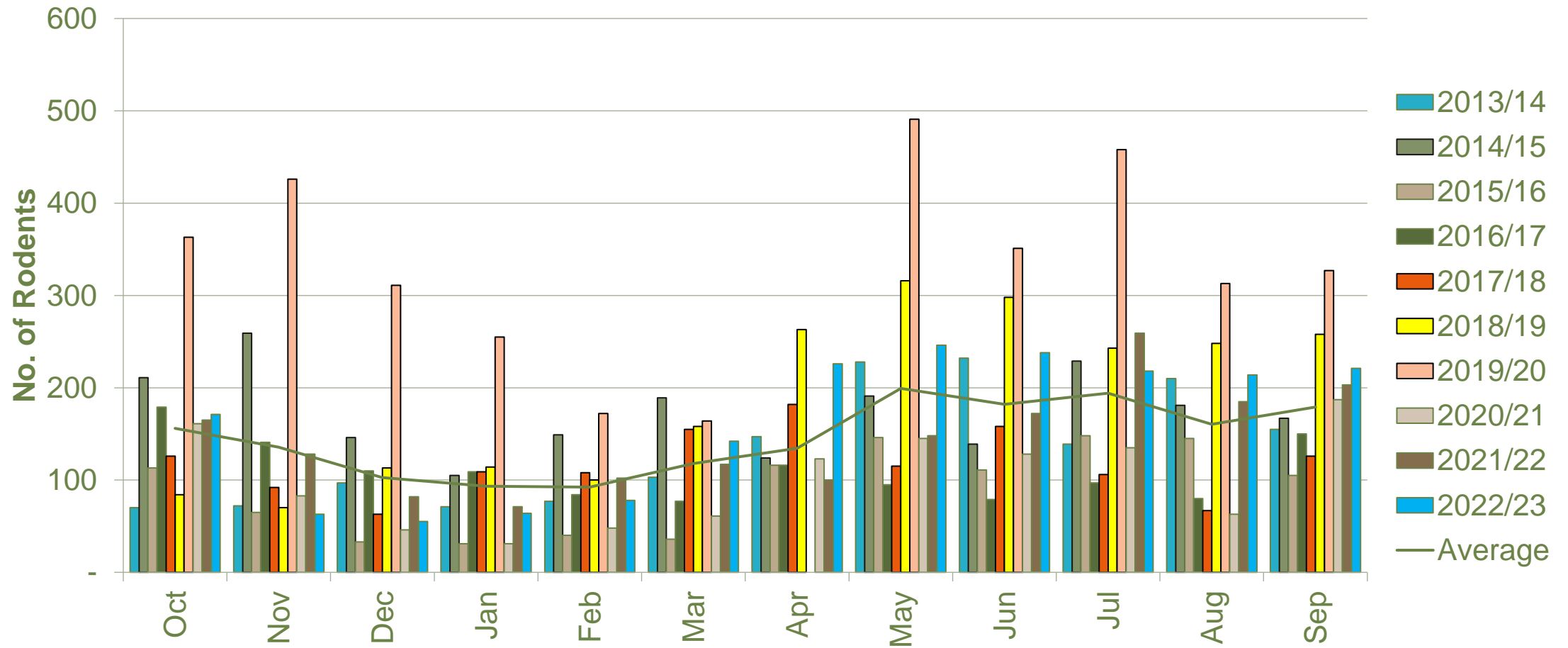
Trapping results: Mustelids by month



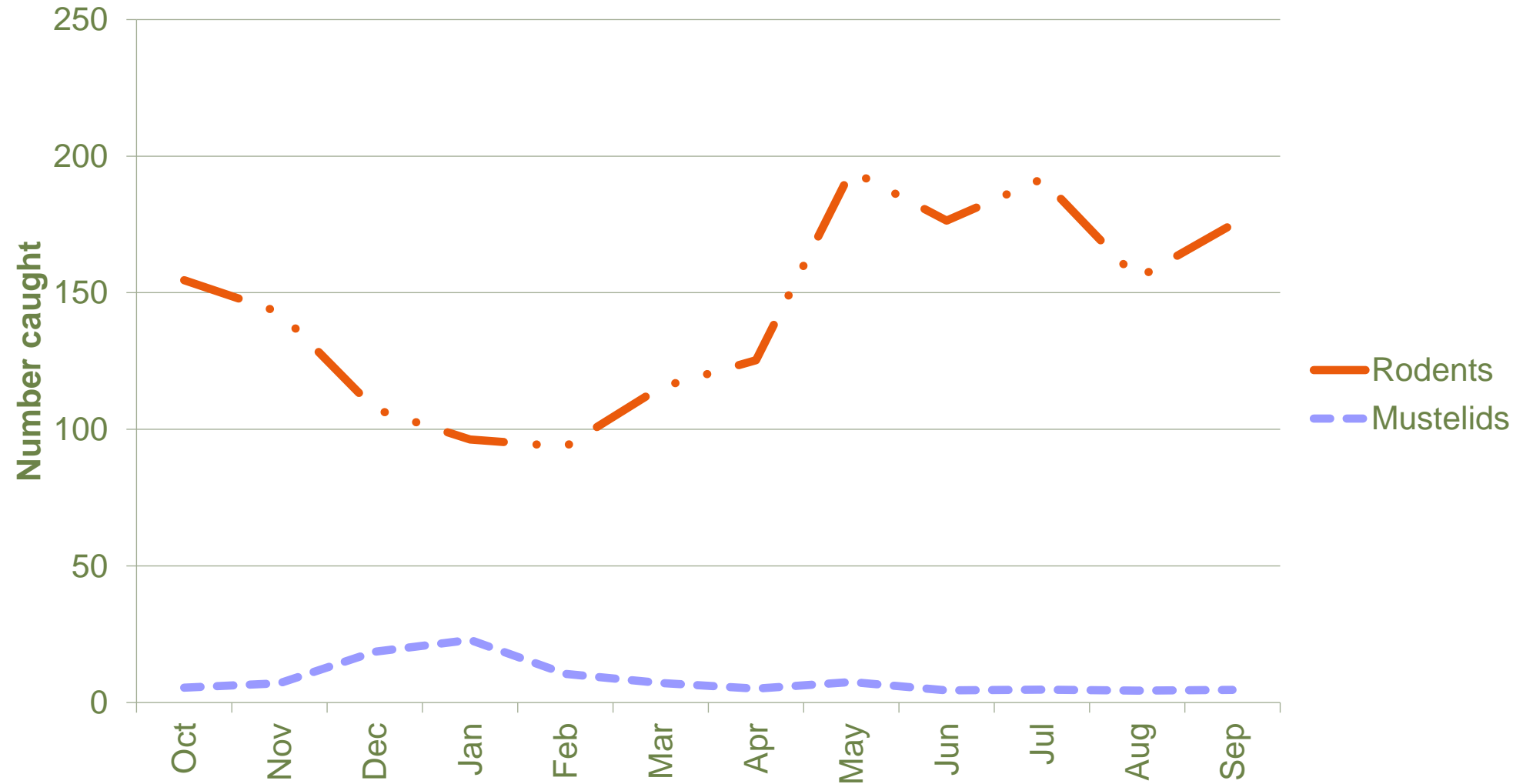
Trapping results: Rodent catch rate



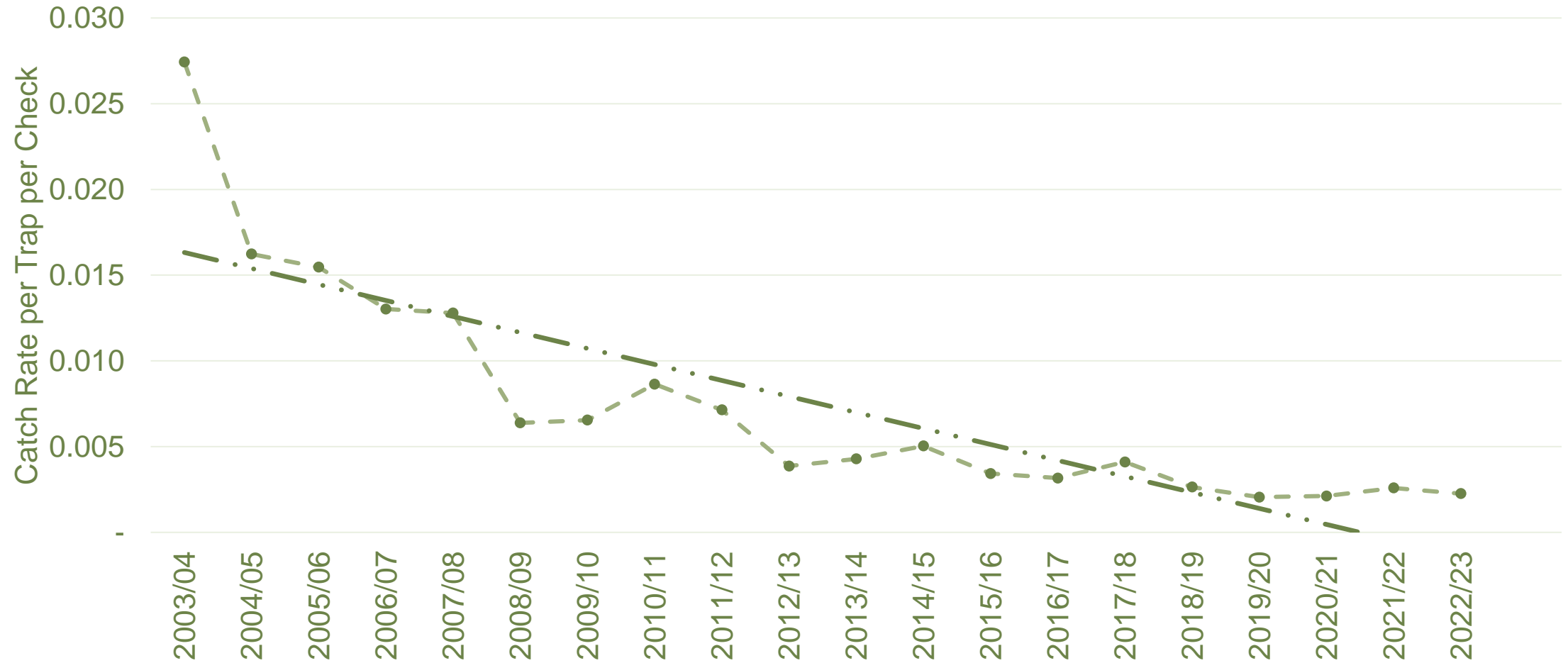
Trapping results: Rodents by month



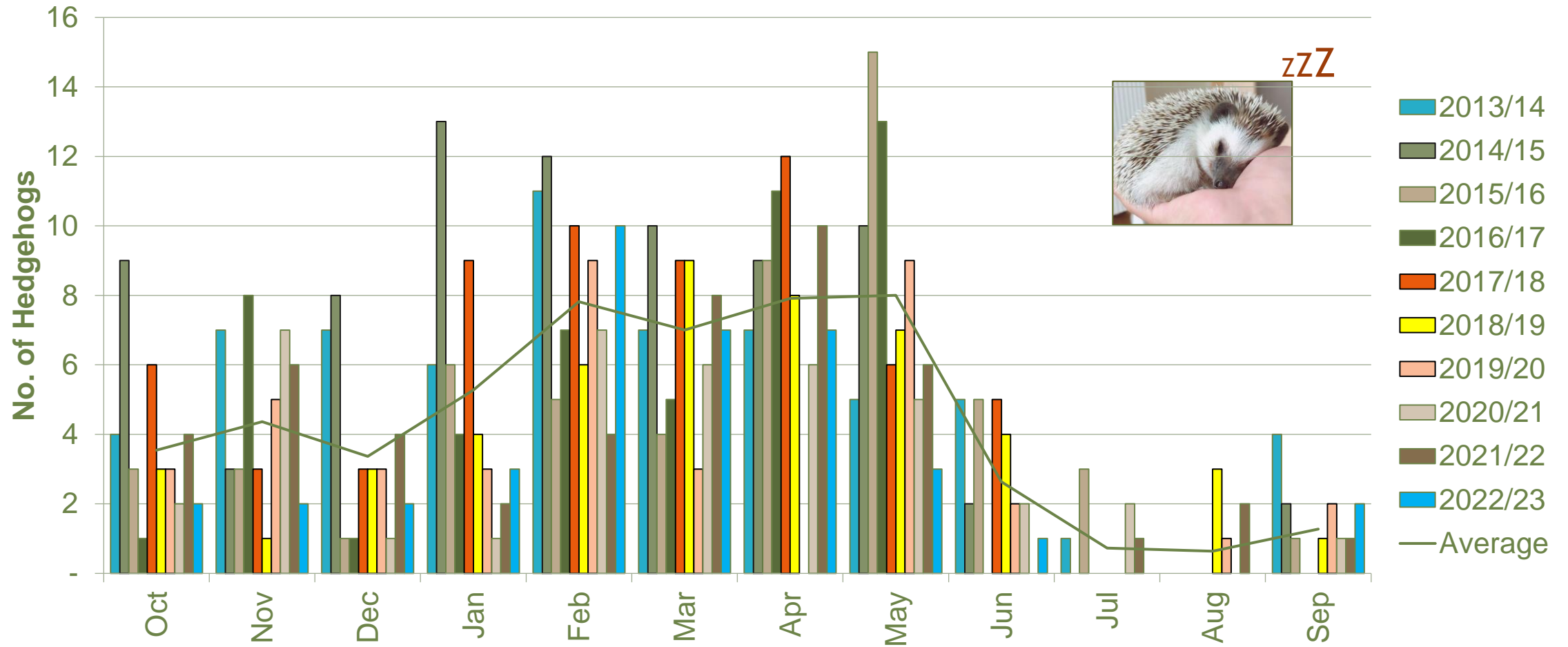
Trapping results: Mustelids versus rodents



Trapping results: Hedgehog catch rate



Trapping results: Hedgehogs by month



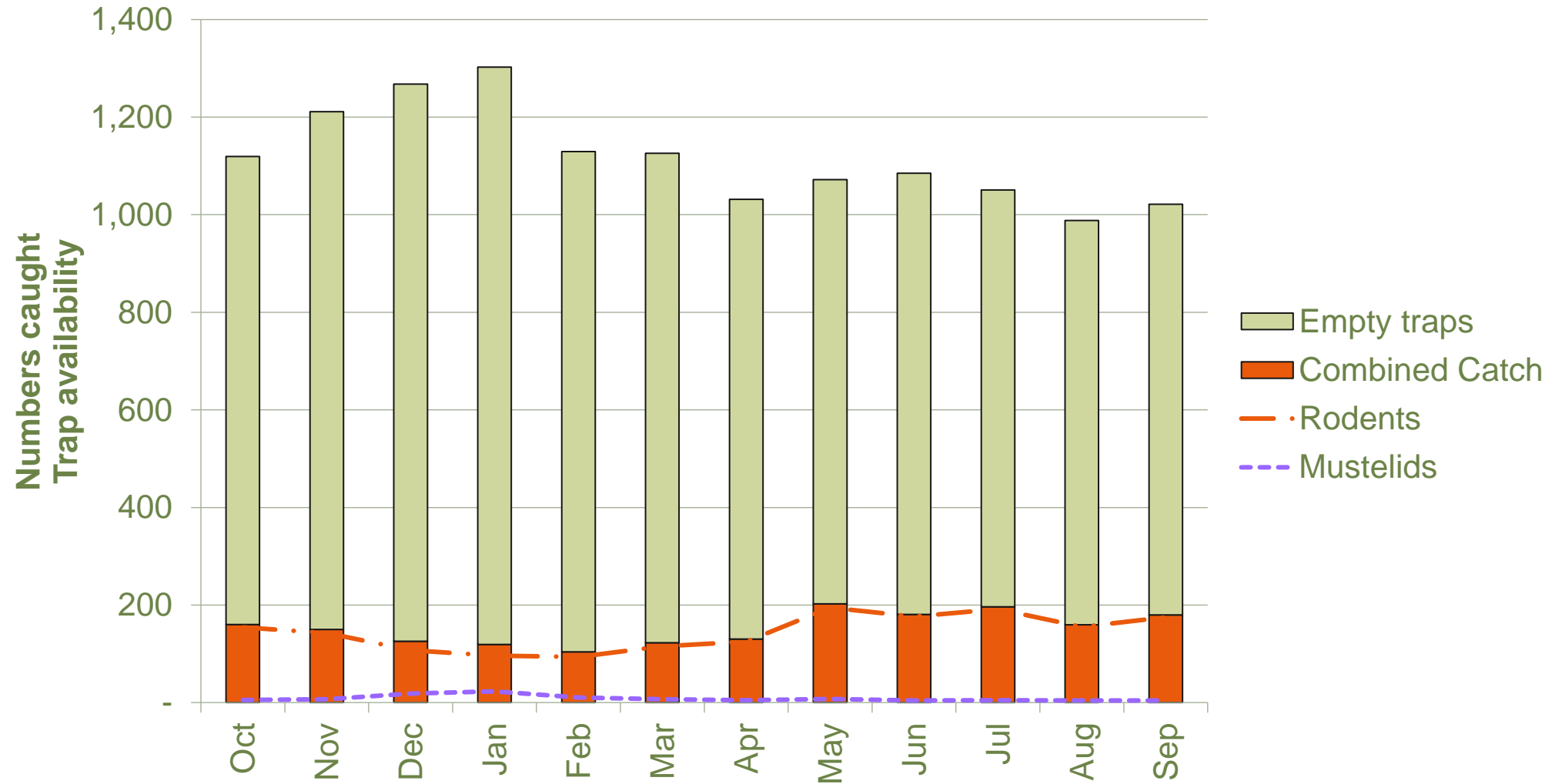
Trapping results: Possums since 2012



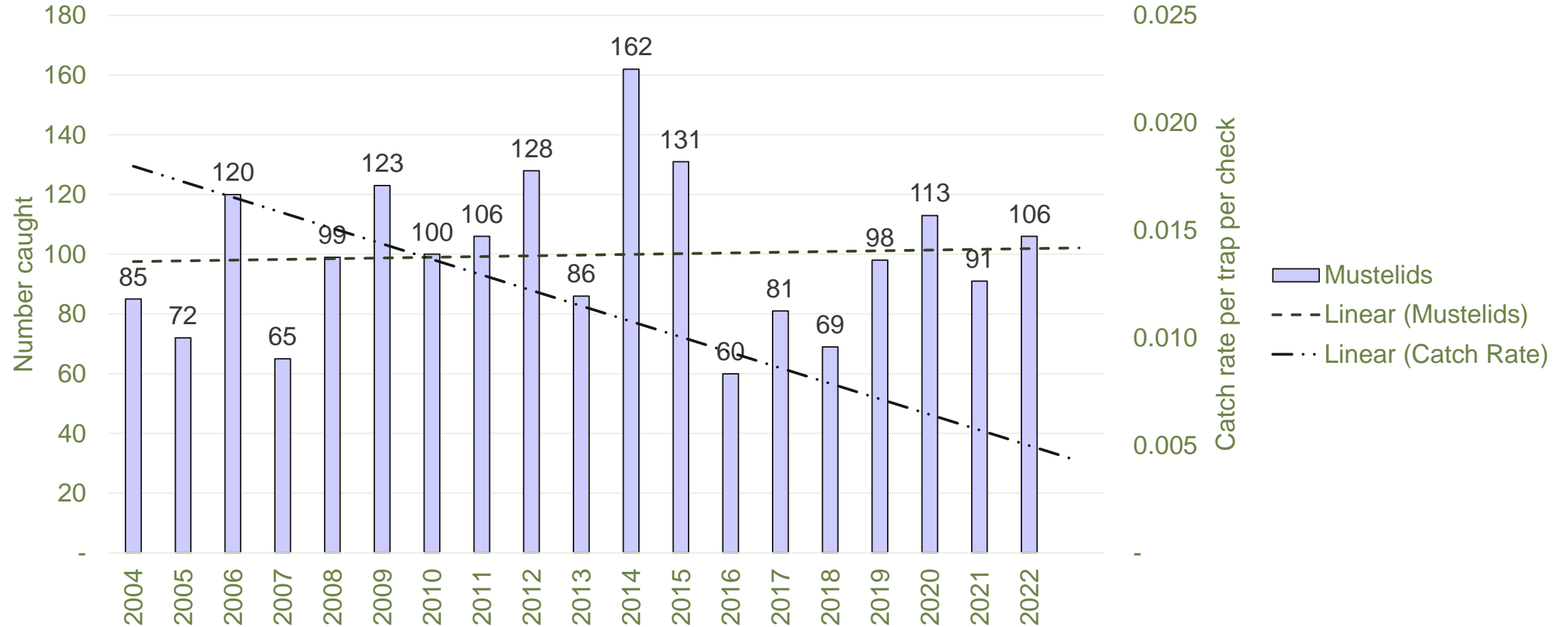
Questions frequently asked of me:

- Do rats clog the traps?
- Are we winning?
- What is the trapping data used for?
- What's the purpose?

Do rats clog the traps?

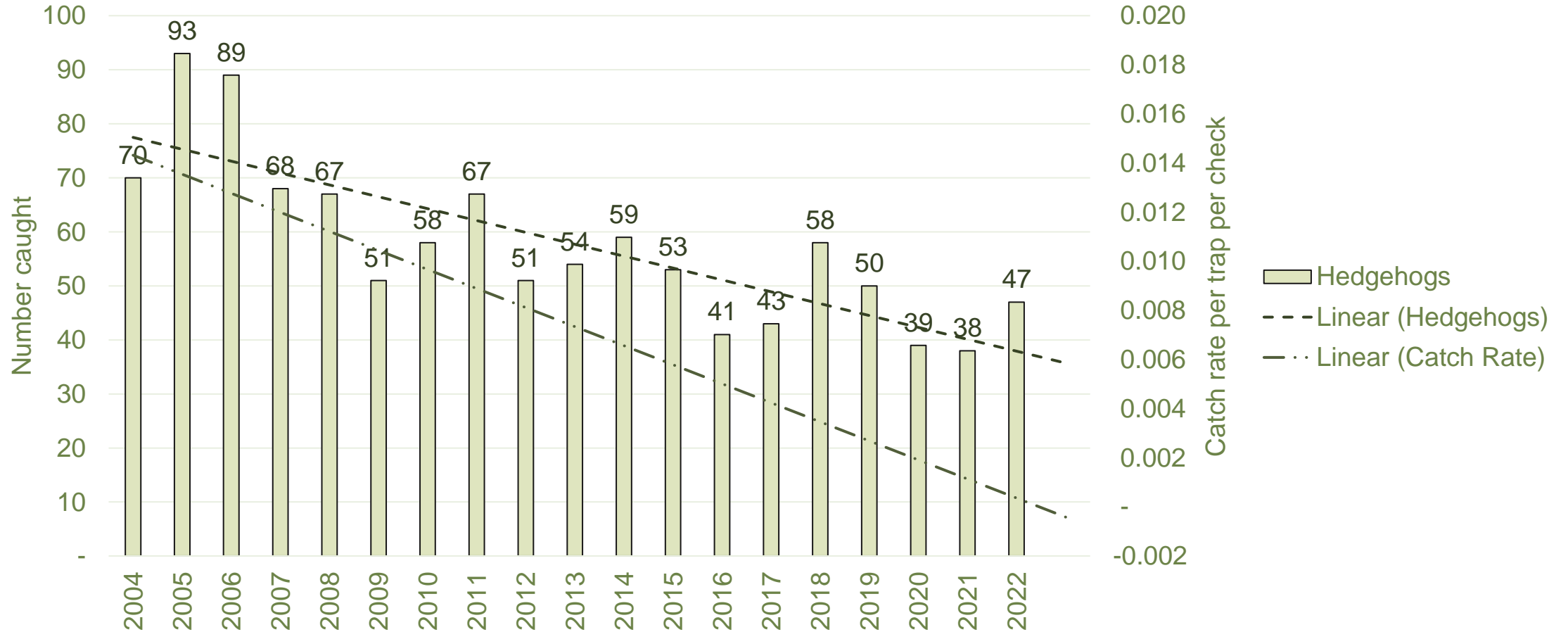


Are we winning - Mustelids?



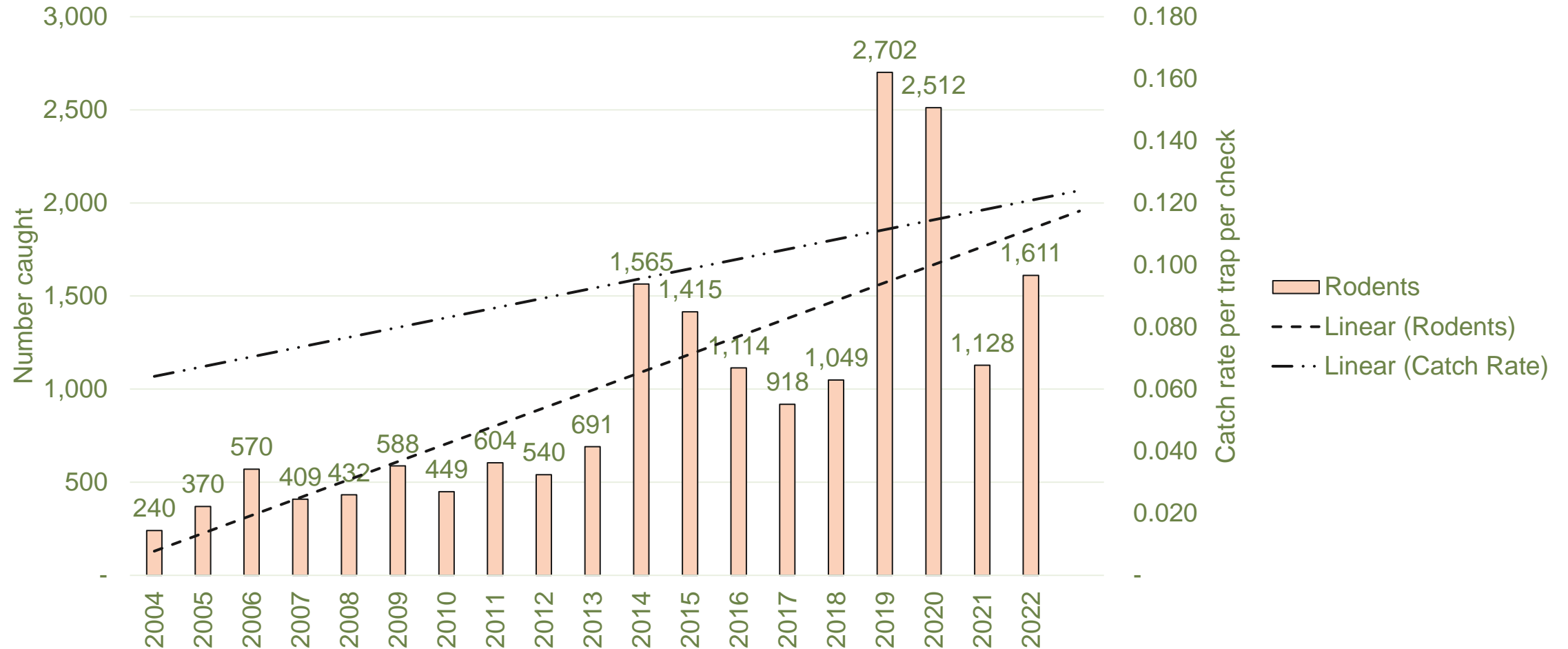
Holding the line - number caught trend slight rise,
- catch rate strong downward trend

Are we winning - Hedgehogs?



Probably winning - numbers downward trend,
- catch rate strong downward trend

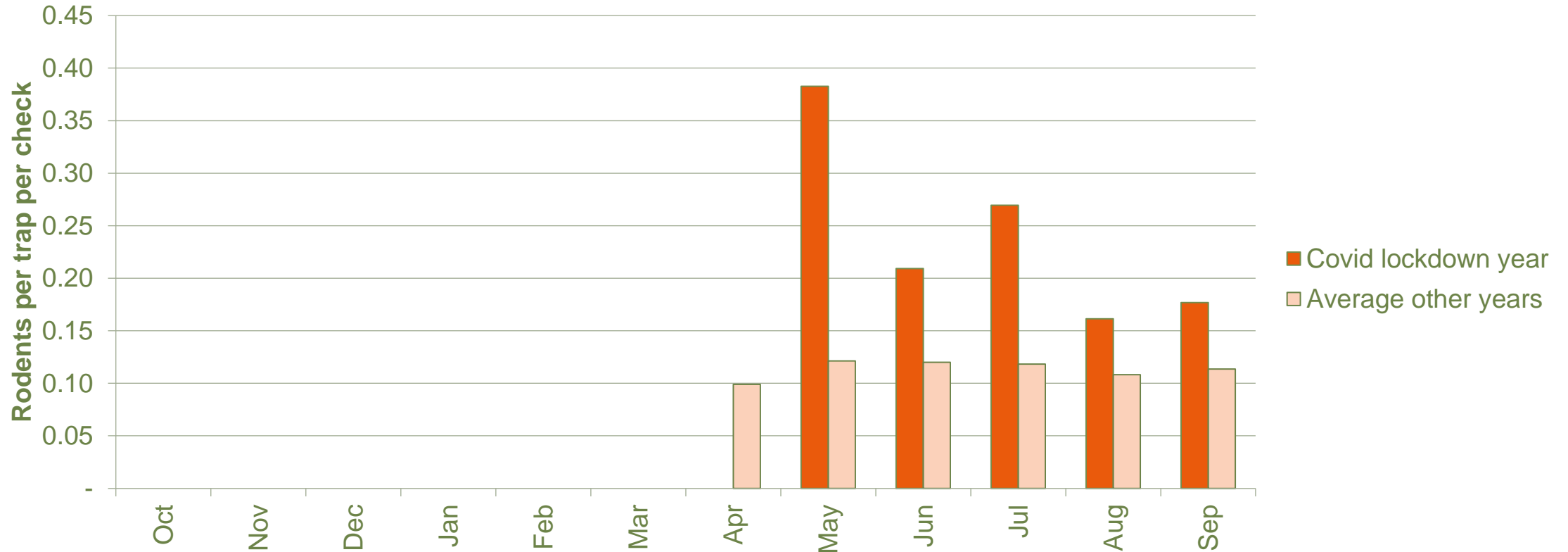
Are we winning - Rodents?



Not good - upward trend in numbers caught and catch rate,
BUT...

Are we winning - Rodents

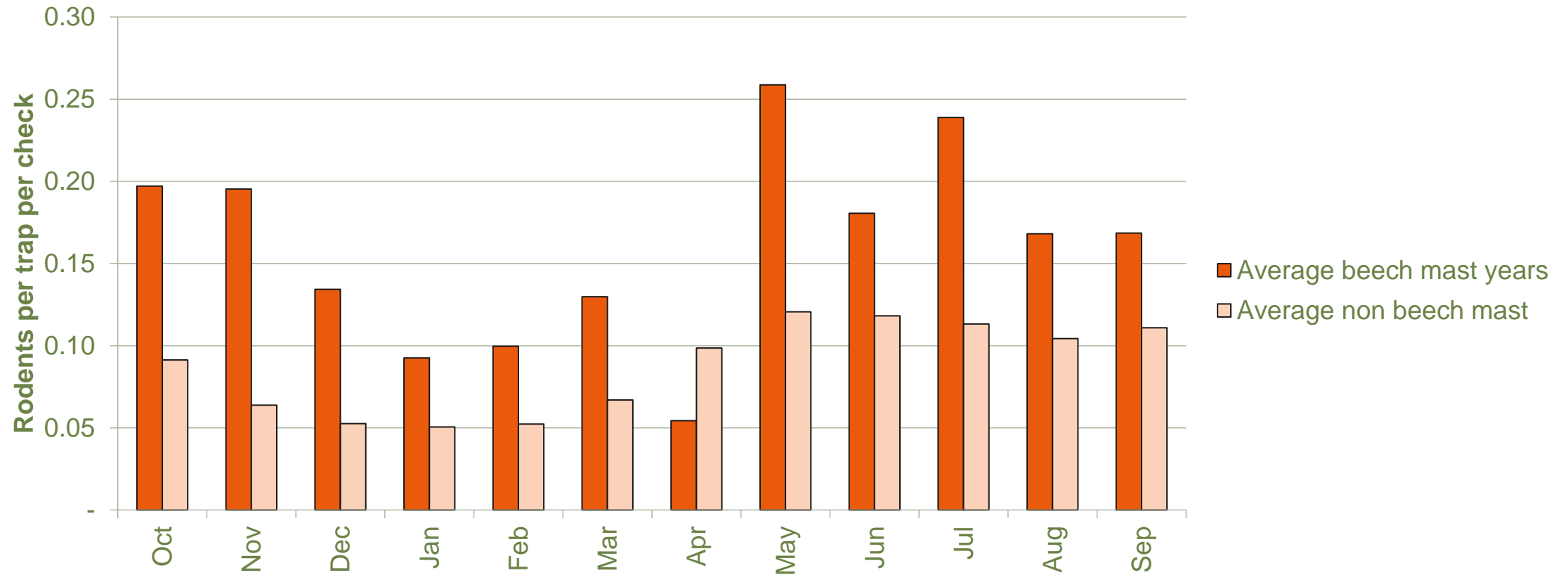
What happens if we stop; 8-week Covid-19 lockdown in 2020



BUT...

Are we winning - Rodents

could it be due to beech mast event?



Ecology is always full of butts!

What is done with the data?

Current:

- Does trapping effort need to be intensified in certain areas?
- Which traps may need servicing?
- Impact of beech-mast events; is intensification required?
- Impact of poisoning operations
- Research: e.g. lure effectiveness

What else will be done with the data?

Coming up:

- Correlation of trapping results with bird call frequency
- Correlation of trapping results with predator monitoring
- Impact of human presence on trap catch
- Are nil-catch checks of traplines increasing? Reasons?

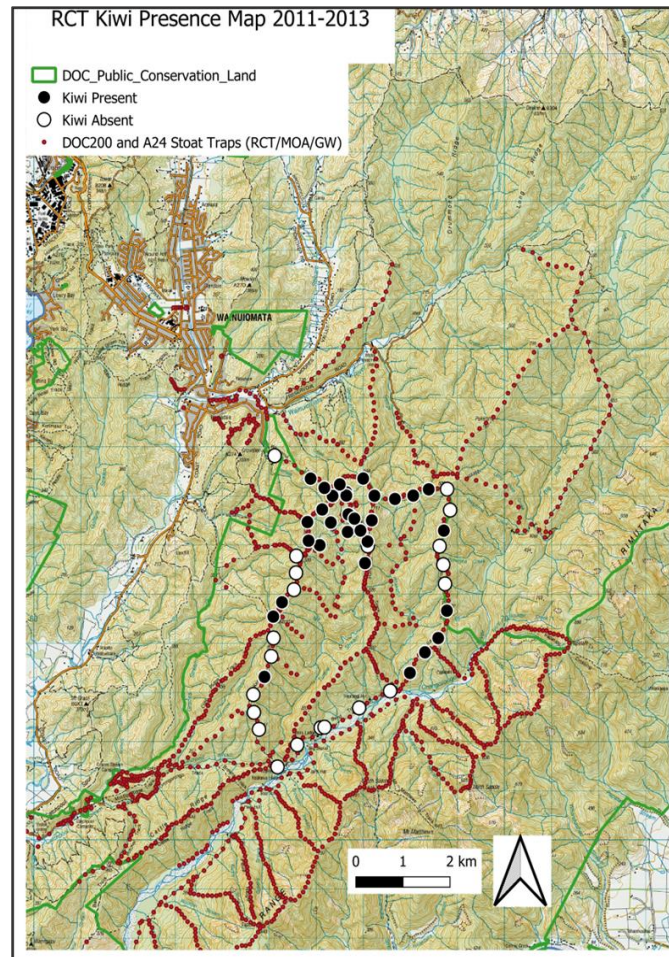
What is the purpose?

Kiwi protection

2006-08 34 kiwi released

2011-13 monitoring

3-5 years post release



Map credit: Susan Ellis

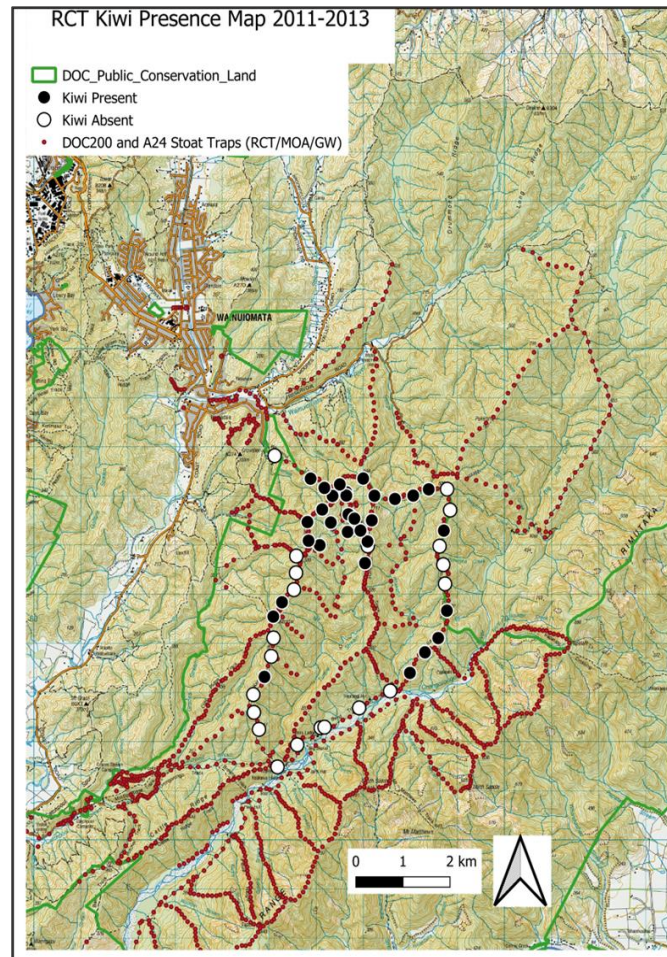
What is the purpose?

Kiwi protection

2006-08 34 kiwi released

2011-13 monitoring

3-5 years post release

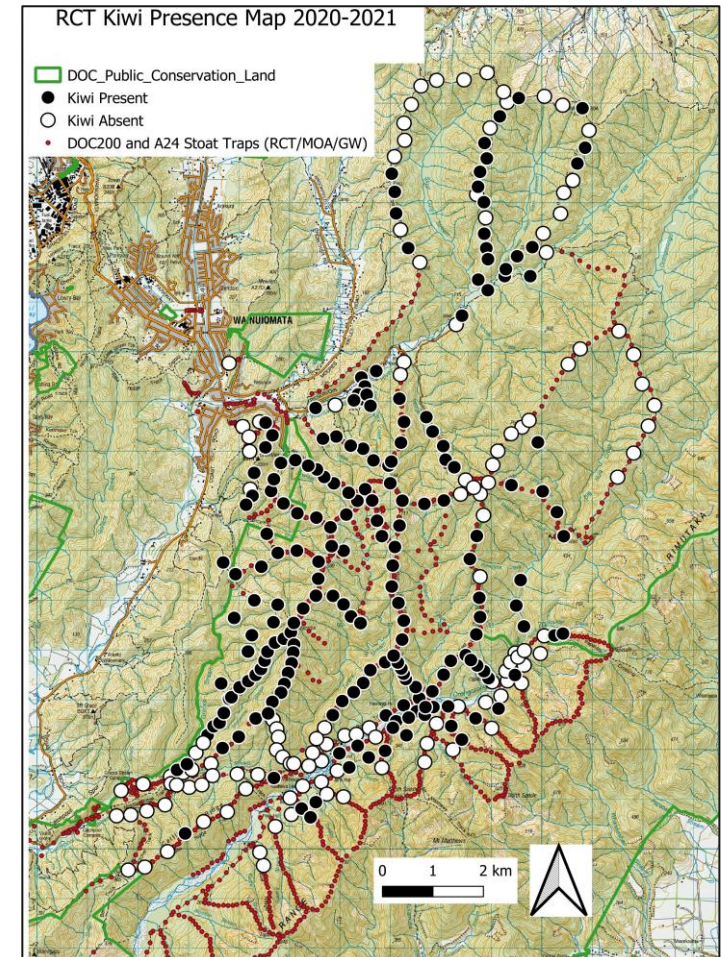


Map credit: Susan Ellis

Current estimate >150

2020-21 monitoring

12-13 years post release



Map credit: Susan Ellis

A big thank you for all your hard work



Copyright © i2Symbol

Thanks also to Susan Ellis and Peter Cooper who provided the 2003 to 2008 trapping data from their archives, and Penny Evans for providing the 2009 to 2017 data.

None of what we do would be possible without the support of Sponsors, Donors and Supporters – Thank you.



Scripting IT Limited



Village Accommodation Group



Four Winds



W N Pharazyn Charitable Trust



NIKAU FOUNDATION



RON and EDNA GREENWOOD ENVIRONMENT TRUST

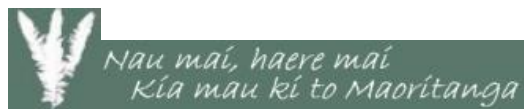
COLIN WEBSTER WATSON TRUST

Flyrite – Rimutaka Heli Services

Lottery Grants



Ngā Takuhe Rota



Te Runanganui o Taranaki Whanui



EMBASSY OF THE UNITED STATES OF AMERICA

Thank you to all those like minded people who sponsor a trap, kiwi, or tree through the trust's sponsorship program.



www.remutaka.nz | PO Box 38-564, Wellington Mail Centre | CC37211



www.remutaka.nz | PO Box 38-564, Wellington Mail Centre | CC37211